

GENERAL NOTES

THIS DRAWING TO BE READ IN CONJUNCTION WITH ARCHITECT'S DRAWINGS, CONSULTANT ENGINEER'S DRAWINGS AND SPECIFICATIONS & LANDSCAPE ARCHITECT'S DRAWINGS. REFER TO ARCHITECT'S SITE PLAN PL002 and PL003 FOR NORTH ORIENTATION, LEVELS GIVEN ON HOUSE TYPE DRAWINGS ARE GIVEN TO A LOCAL ABSOLUTE ZERO LEVEL. FOR SPECIFIC LEVELS DEPENDING ON INDIVIDUAL UNIT DRAWINGS WHERE LEVELS ARE GIVEN IN RELATION TO LAND SURFACE FOR BENCHMARK BASED ON MAIN HEAD DATUM LEVEL.

 REFER TO SITE LAYOUT PLAN FOR NORTH ORIENTATION
REFER TO CONSULTING ENGINEERS DRAWINGS FOR BLOCK LEVELS

NOTES ON FINISHES :

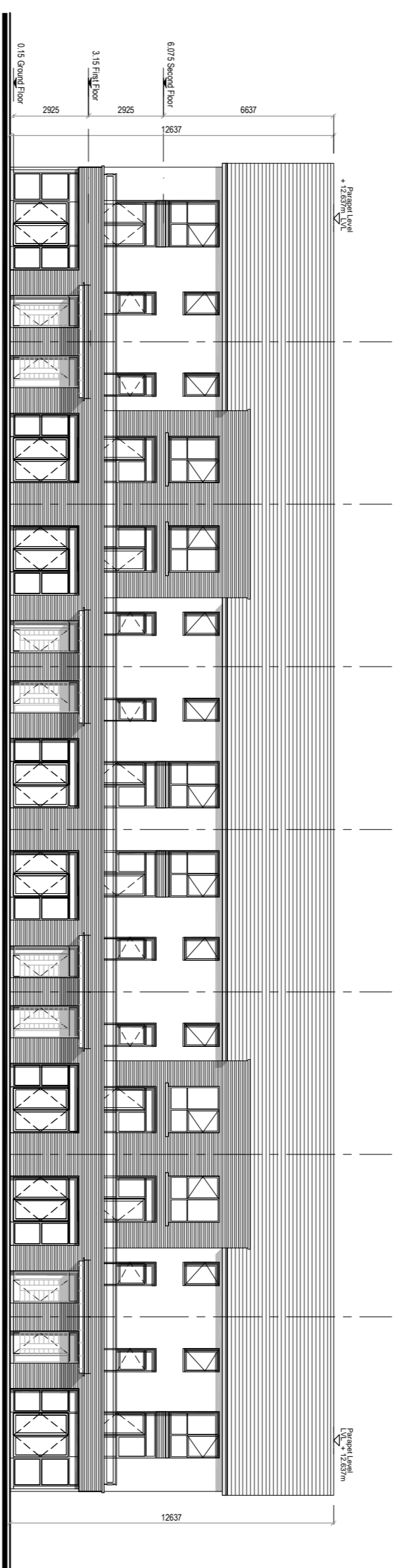
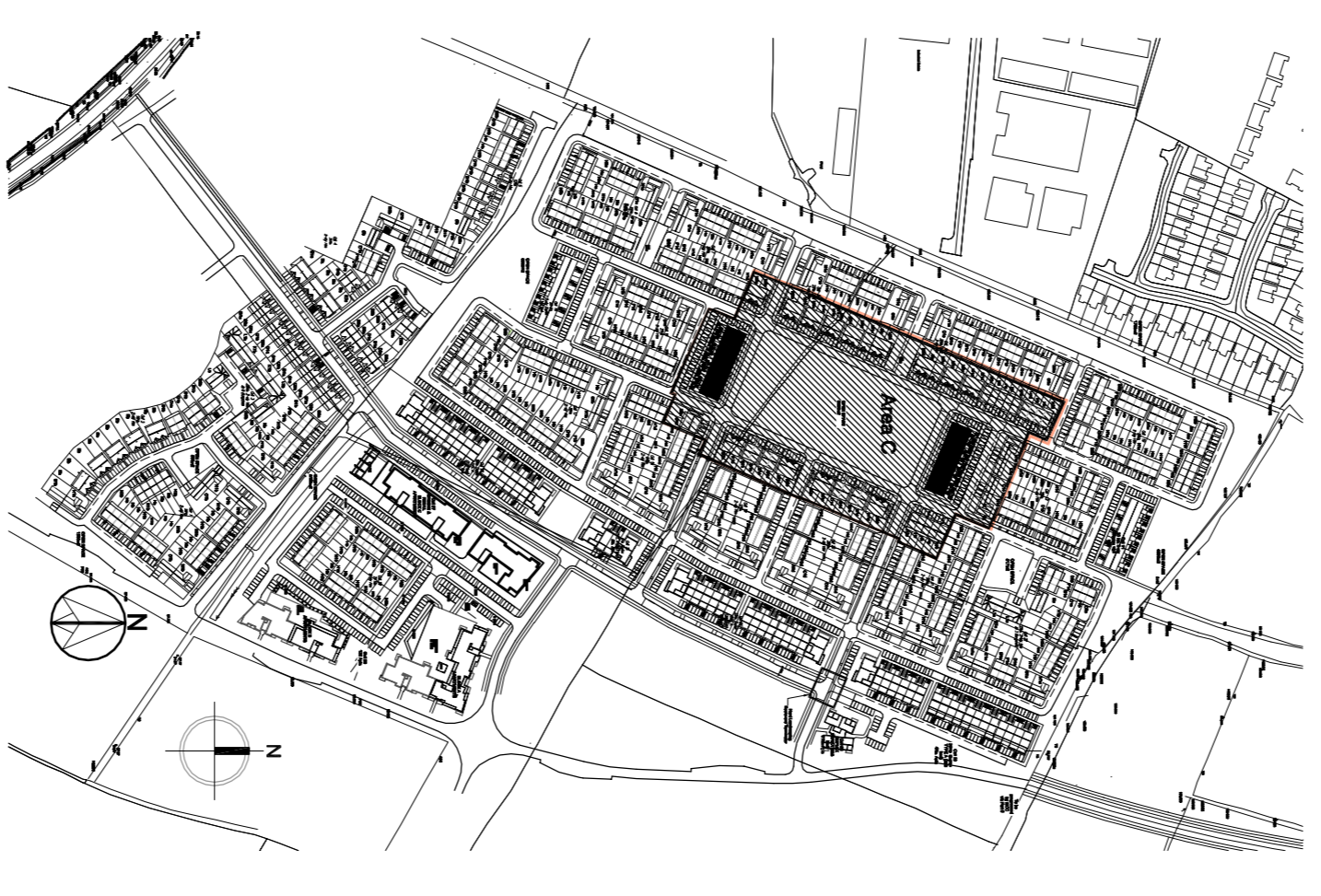
ROOF : TO BE FINISHED IN SLATE OR CONCRETE ROOF TILES IN SELECTED COLOUR OR SIMILAR APPROVED.
WALLS : SELECTED CLAY BRICKWORK WHERE INDICATED OTHERWISE PAINTED SAND / CEMENT RENDER OR SELF COLOURED RENDER OR ON FLASH TO CONCEALED SIDE GABLES.

JOINERY : ALL WINDOWS AND DOORS, FRAMES AND LEAVES, TO BE ALUMINIUM POWDER COATED TO APPROVED COLOUR AND FINISH. GLAZING TO BE SECURE GLAZING WHERE INDICATED TO SENSITIVE WINDOWS.

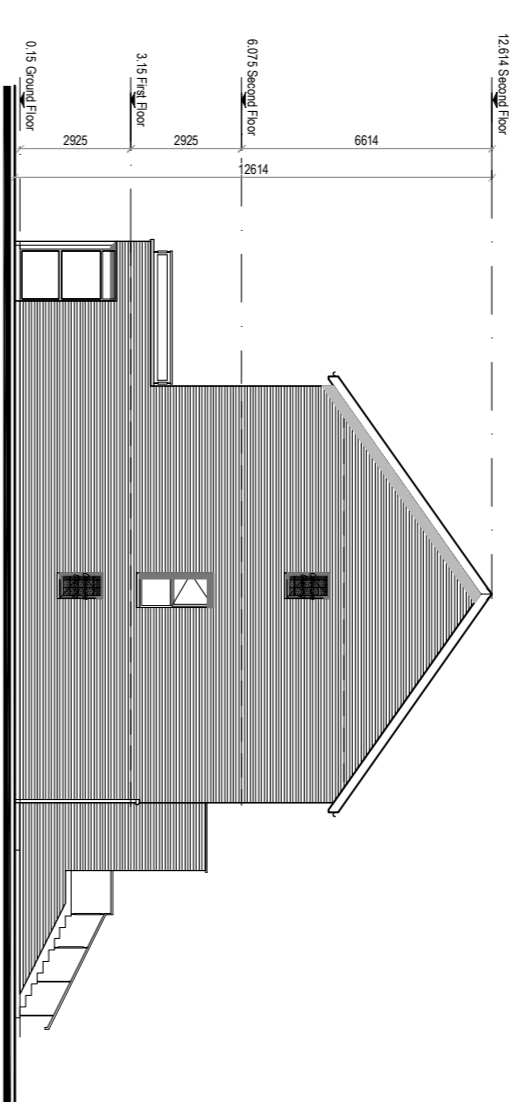
RAINWATER GOODS : GUTTERS, DOWNPIPES, AND FINISHES TO BE ALPC OR ALUMINIUM POWDER COATED TO SELECTED COLOUR TO MATCH ROOF SLATES

* SOLAR PANELS : INDICATIVE SOLAR PANEL POSITION. FINAL SOLAR PANEL POSITION DEPENDS ON HOUSE ORIENTATION. THE SOLAR PANELS SHOWN ARE A PROVISIONAL OPTION TO SATISFY RENEWABLE ENERGY REQUIREMENTS OF BUILDING REGS PART L2. AN ALTERNATIVE RENEWABLE ENERGY SOURCE CAN BE ALTERNATIVE RENEWABLE ENERGY SOURCE.

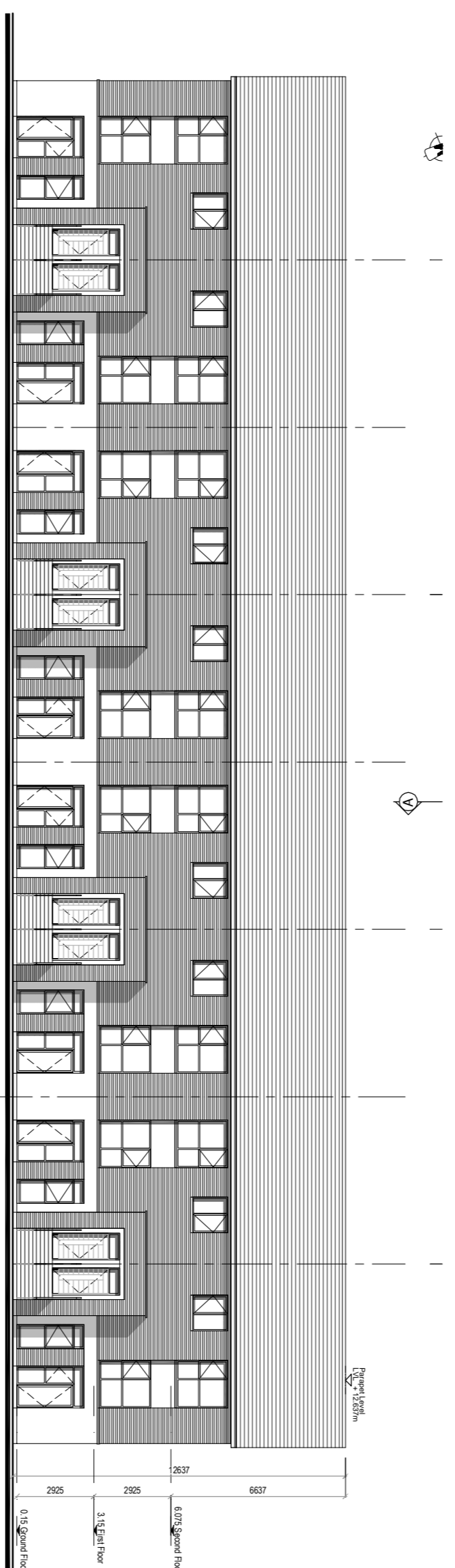
KEY PLAN (N.T.S.)



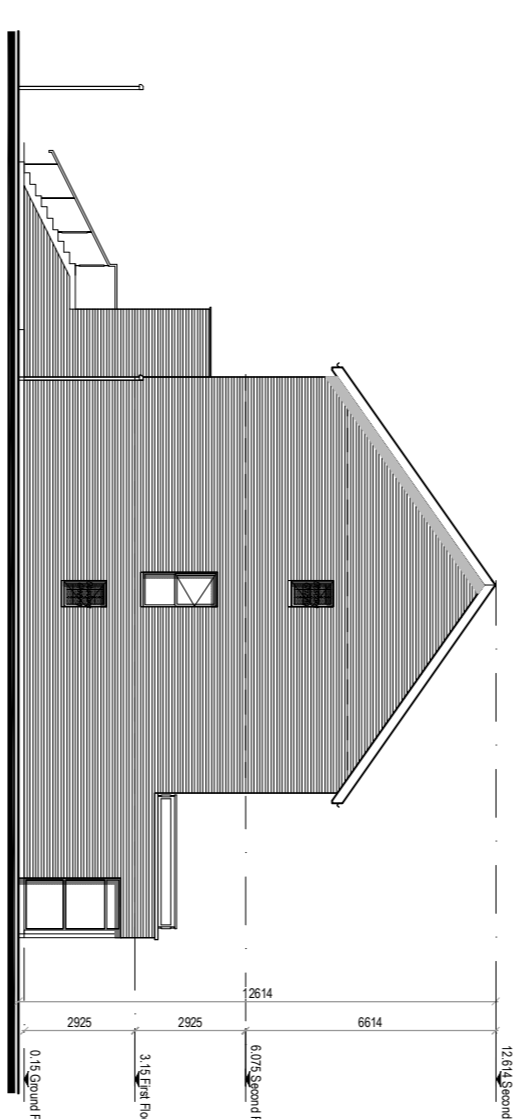
FRONT ELEVATION TO P.O.S.



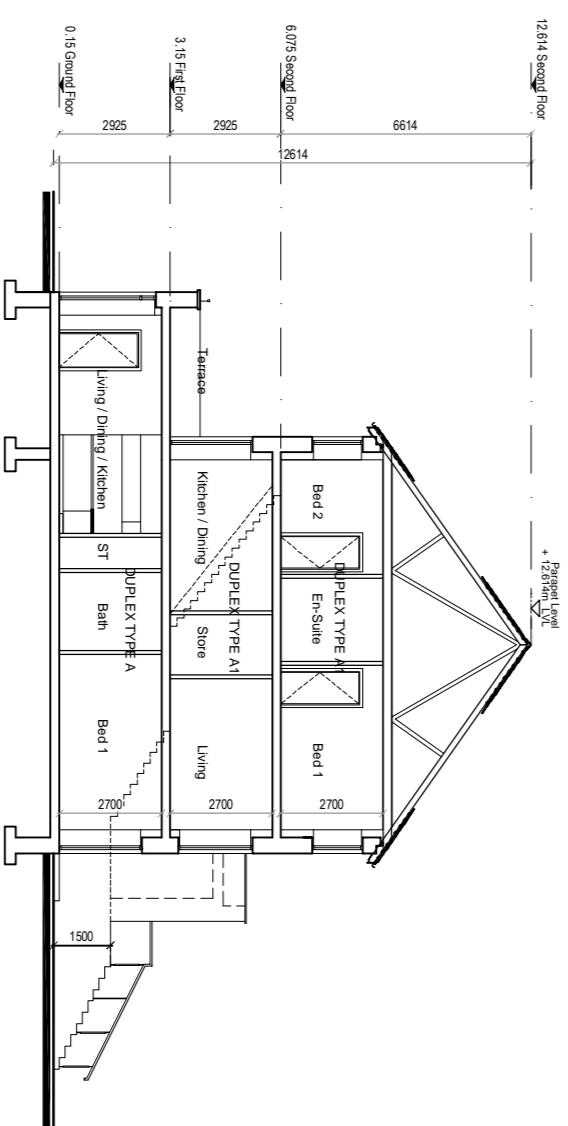
GABLE ELEVATION



REAR ELEVATION TO PARKING COURT



GABLE ELEVATION



SECTION A -A

NOTES:

DO NOT SCALE FROM THIS DRAWING. DIMENSIONS FIGURED DIMENSIONS ONLY. ARCHITECT TO BE NOTIFIED OF ALL DISCREPANCIES

REVISIONS

NO.	DATE	DESCRIPTION

MCRM
MCR CROSSAN ENGINEERING ARCHITECTS

PROJECT TITLE	DATE	DRAWN BY
The Willows, Dunshaughlin	Dec 18	DE
DRAWING TITLE	SCALE	REVISION
Proposed Duplex Cell 13 & Cell 14 Elevations & Section	1:200 @ A1	
ALPAC PROJECT NAME: HERRINGSTONE COURT 2, BALLYVAUGHAN, DUBLIN 14	DRAWING NO	
ALPAC PROJECT NO: 16028_1	210	